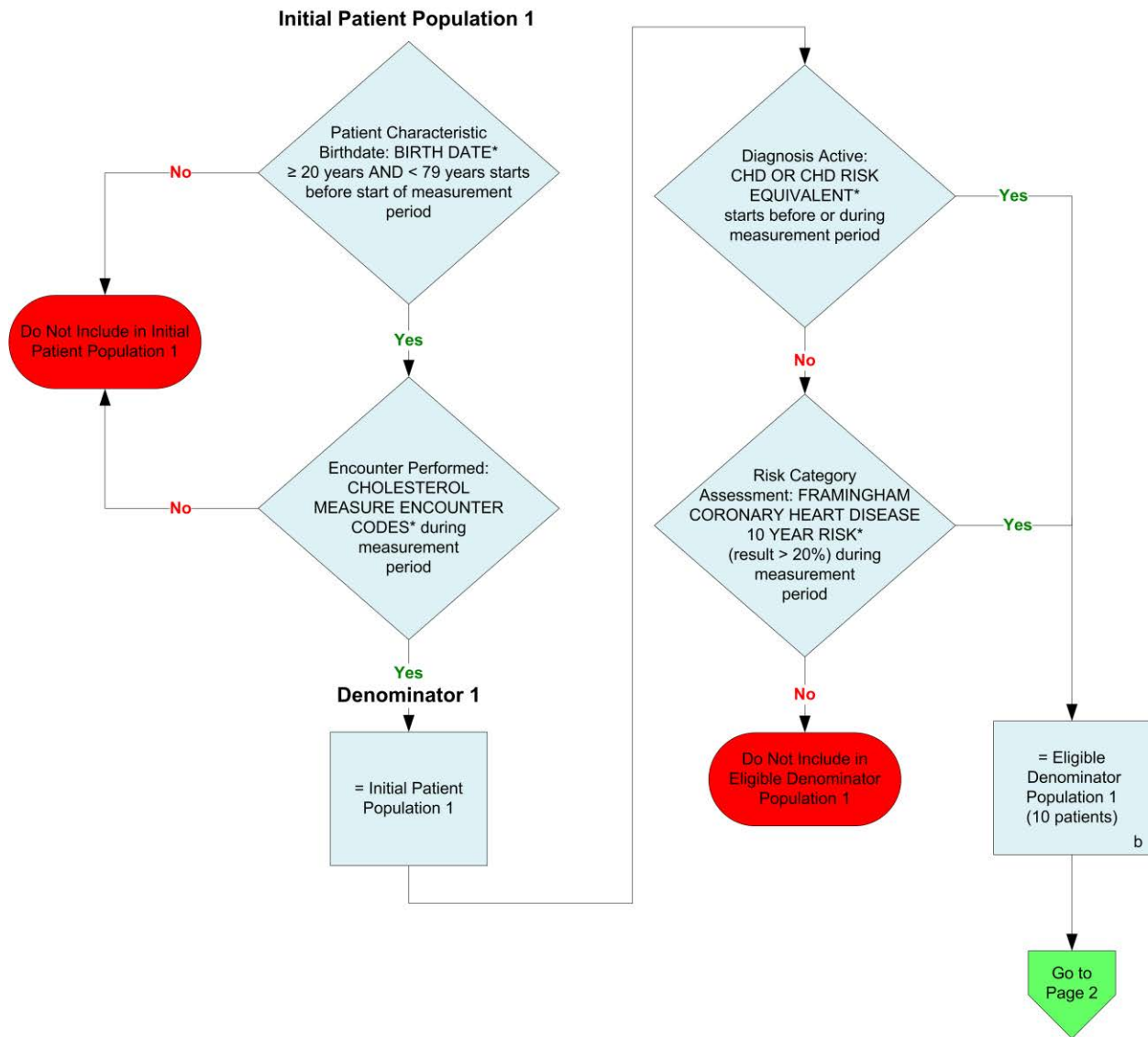


2014 eCQM Flow  
Measure Identifier: CMS61v4  
Preventive Care and Screening: Cholesterol – Fasting Low Density Lipoprotein (LDL-C) Test Performed

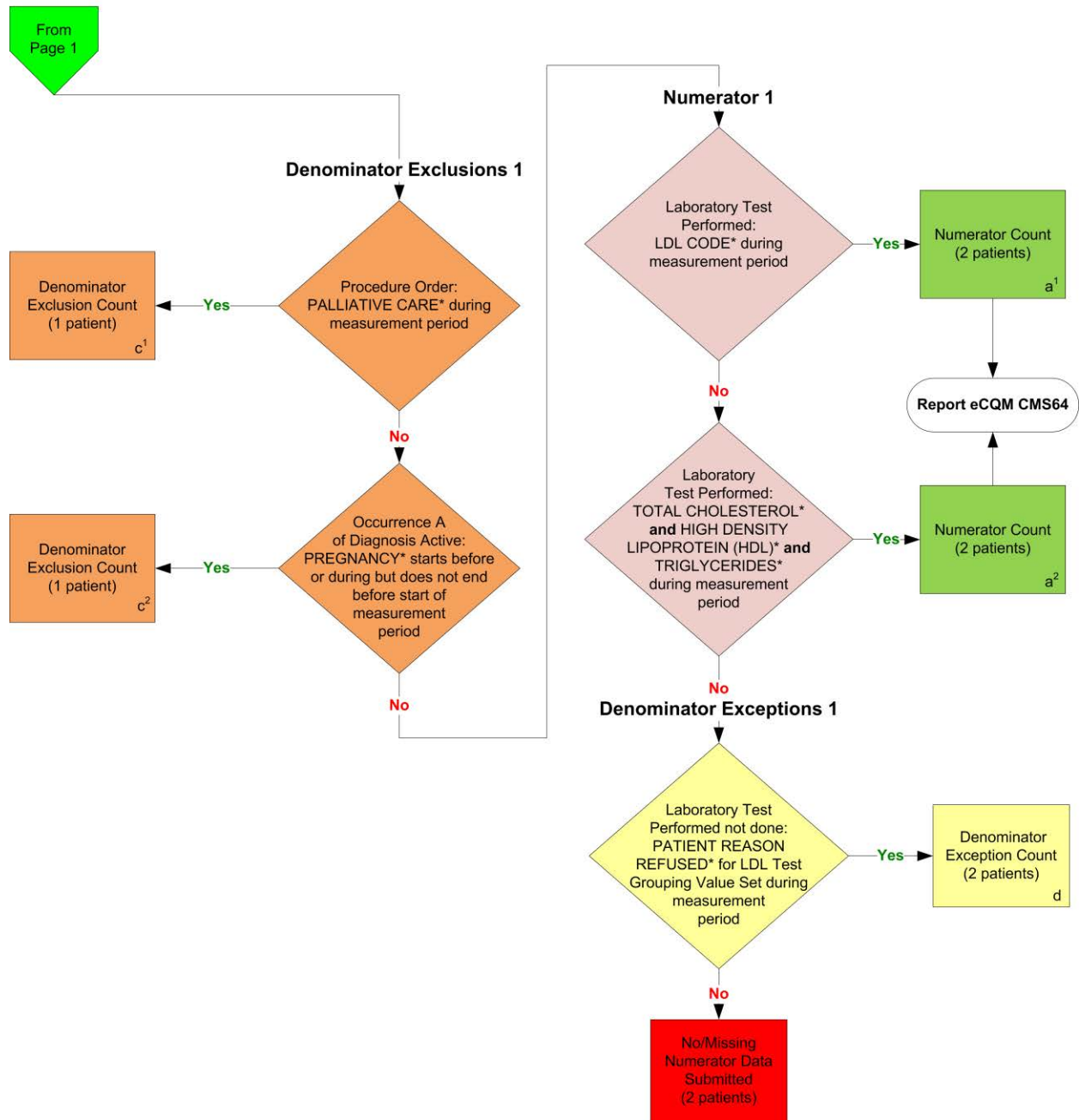
*This eCQM requires the reporting of three Performance Rates*



\*Please refer to the specific section of the eCQM to identify the QDM data elements and associated value sets for use in reporting the eCQM.

2014 eCQM Flow  
Measure Identifier: CMS61v4

Preventive Care and Screening: Cholesterol – Fasting Low Density Lipoprotein (LDL-C) Test Performed



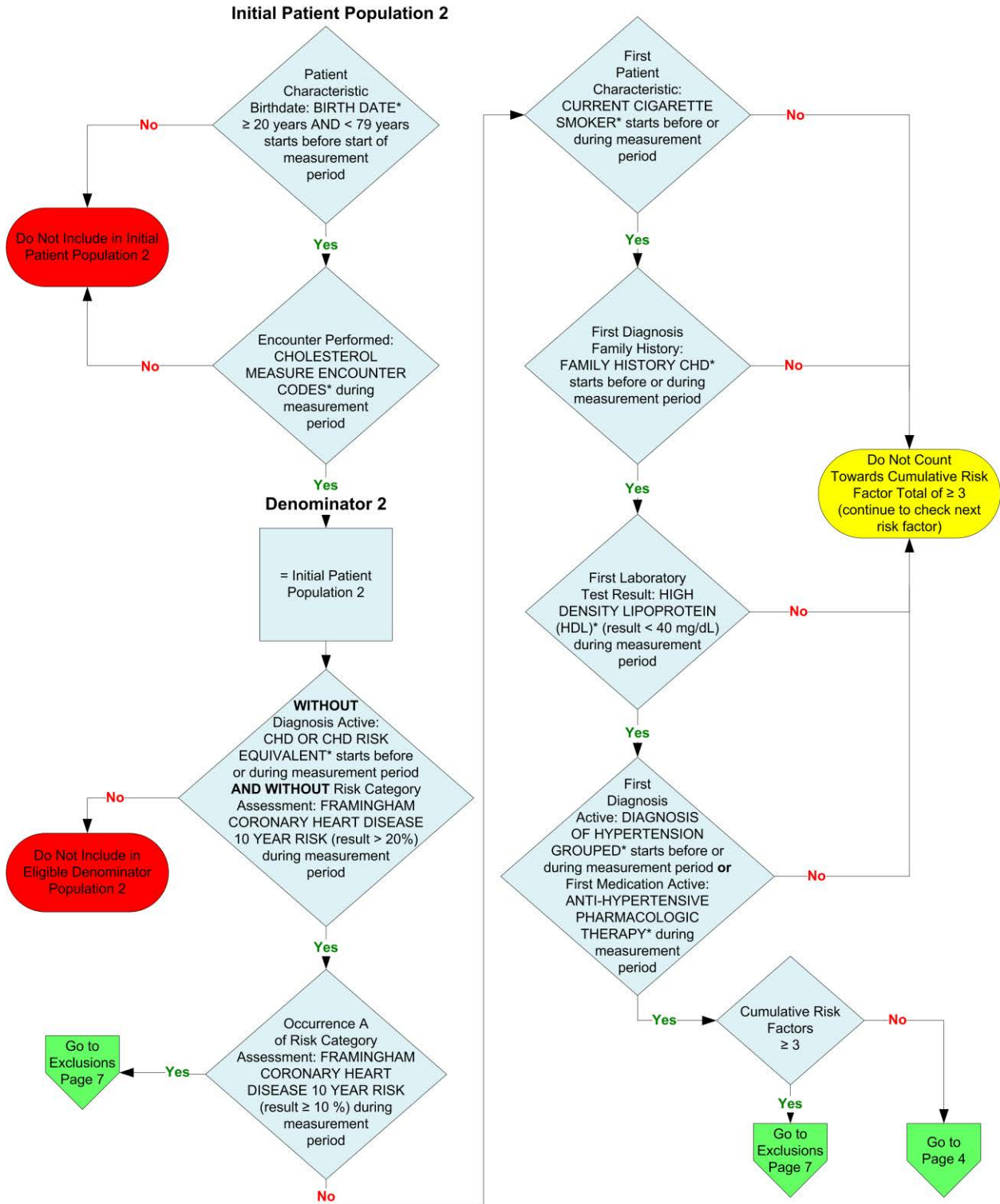
\*Please refer to the specific section of the eCQM to identify the QDM data elements and associated value sets for use in reporting the eCQM.

**SAMPLE CALCULATION:** Combination of Initial Patient Population 1; Denominator 1; Numerator 1

**Performance Rate=**

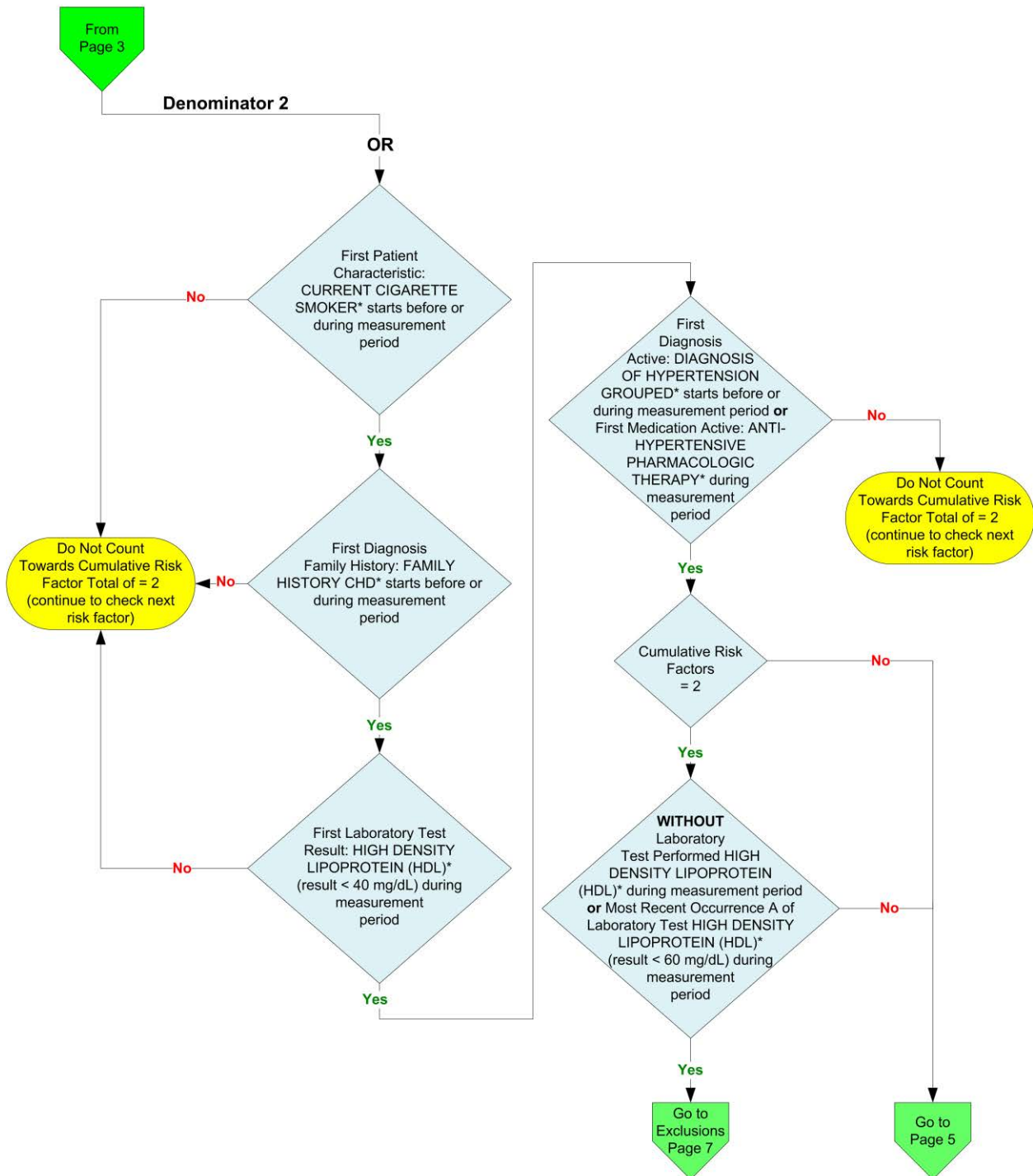
$$\frac{\text{Numerator } (a^1 + a^2 = 4 \text{ patients})}{\text{Denominator } (b=10 \text{ patients}) - \text{Denominator Exclusions } (c^1 + c^2 = 2 \text{ patients}) - \text{Denominator Exceptions } (d = 2 \text{ patients})} = 66.67\%$$

2014 eCQM Flow  
Measure Identifier: CMS61v4  
Preventive Care and Screening: Cholesterol – Fasting Low Density Lipoprotein (LDL-C) Test Performed



\*Please refer to the specific section of the eCQM to identify the QDM data elements and associated value sets for use in reporting the eCQM.

2014 eCQM Flow  
Measure Identifier: CMS61v4  
Preventive Care and Screening: Cholesterol – Fasting Low Density Lipoprotein (LDL-C) Test Performed

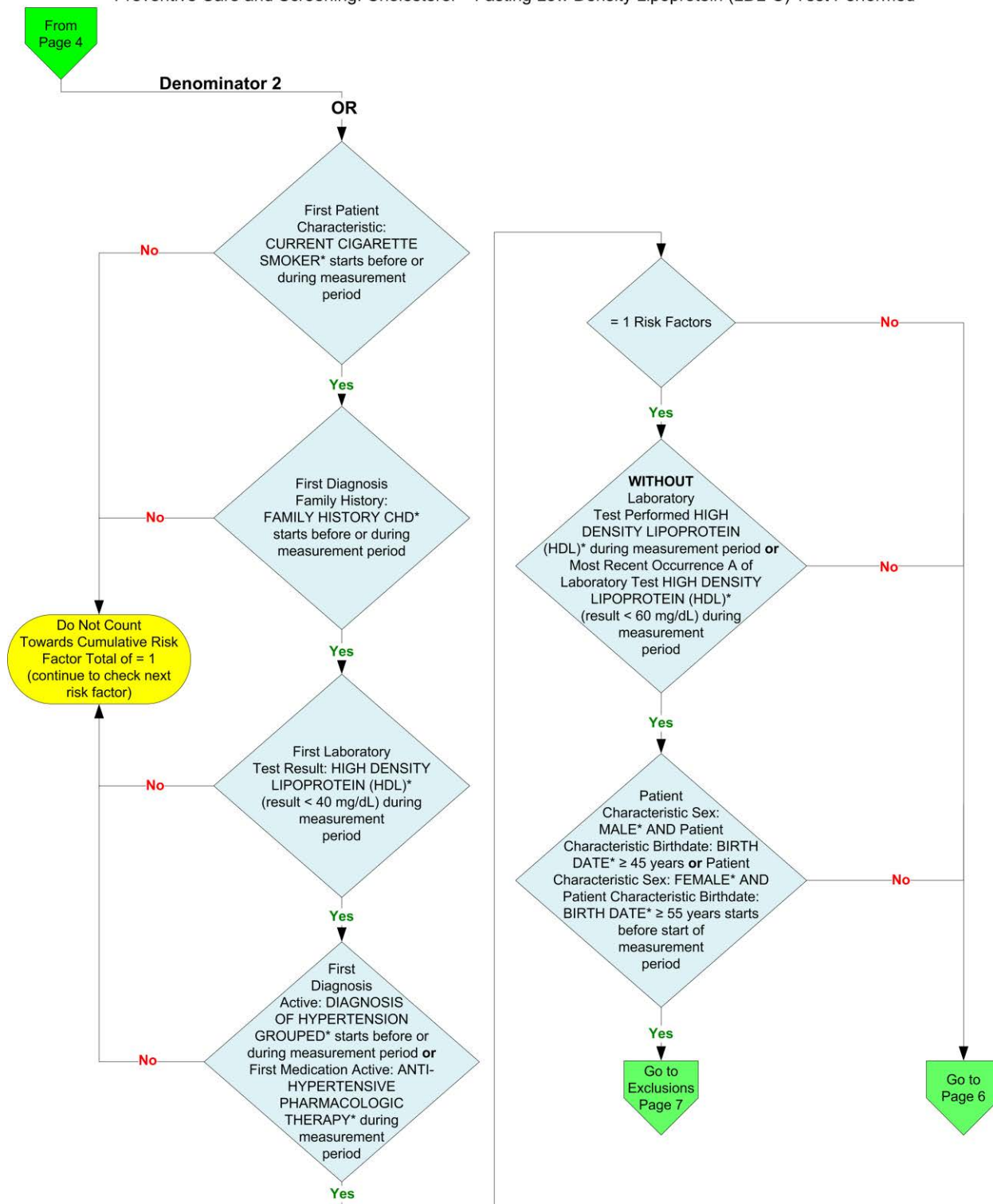


\*Please refer to the specific section of the eCQM to identify the QDM data elements and associated value sets for use in reporting the eCQM.



2014 eCQM Flow  
Measure Identifier: CMS61v4

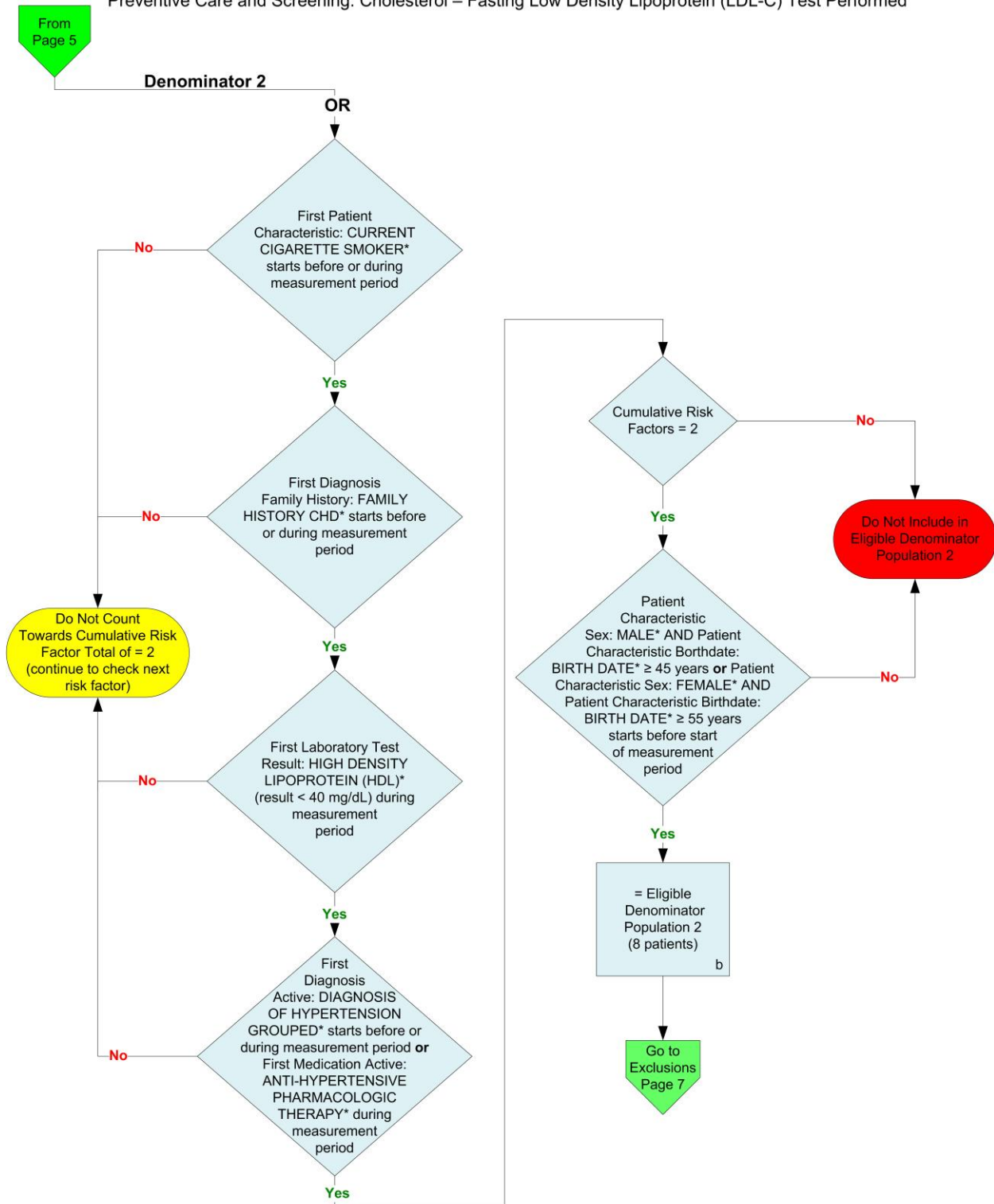
Preventive Care and Screening: Cholesterol – Fasting Low Density Lipoprotein (LDL-C) Test Performed



\*Please refer to the specific section of the eCQM to identify the QDM data elements and associated value sets for use in reporting the eCQM.

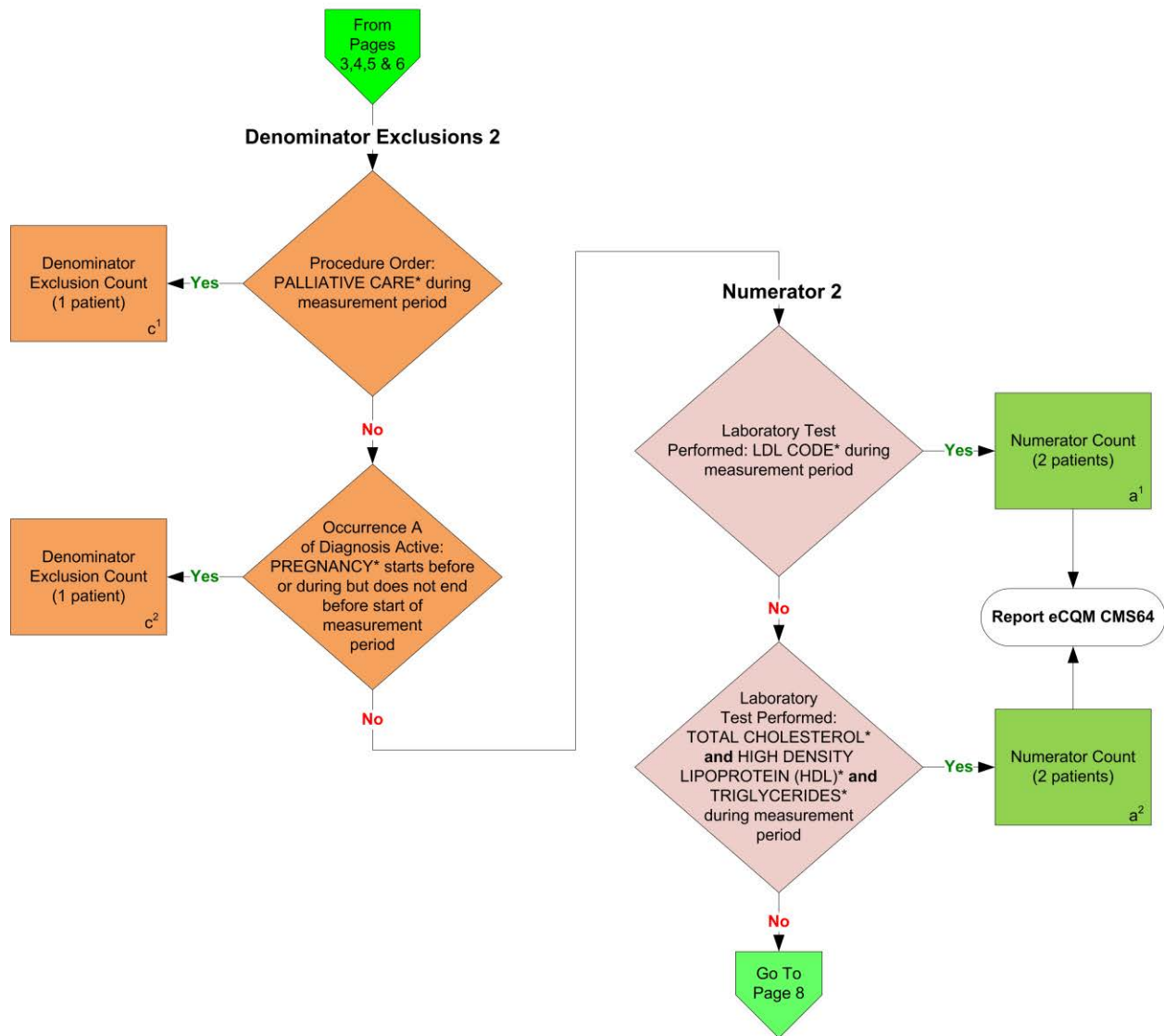
2014 eCQM Flow  
Measure Identifier: CMS61v4

Preventive Care and Screening: Cholesterol – Fasting Low Density Lipoprotein (LDL-C) Test Performed



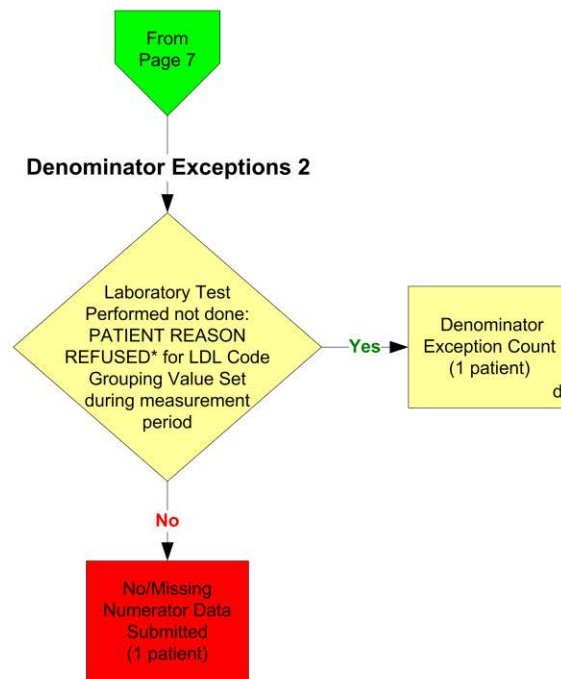
\*Please refer to the specific section of the eCQM to identify the QDM data elements and associated value sets for use in reporting the eCQM.

2014 eCQM Flow  
Measure Identifier: CMS61v4  
Preventive Care and Screening: Cholesterol – Fasting Low Density Lipoprotein (LDL-C) Test Performed



\*Please refer to the specific section of the eCQM to identify the QDM data elements and associated value sets for use in reporting the eCQM.

2014 eCQM Flow  
Measure Identifier: CMS61v4  
Preventive Care and Screening: Cholesterol – Fasting Low Density Lipoprotein (LDL-C) Test Performed



\*Please refer to the specific section of the eCQM to identify the QDM data elements and associated value sets for use in reporting the eCQM.

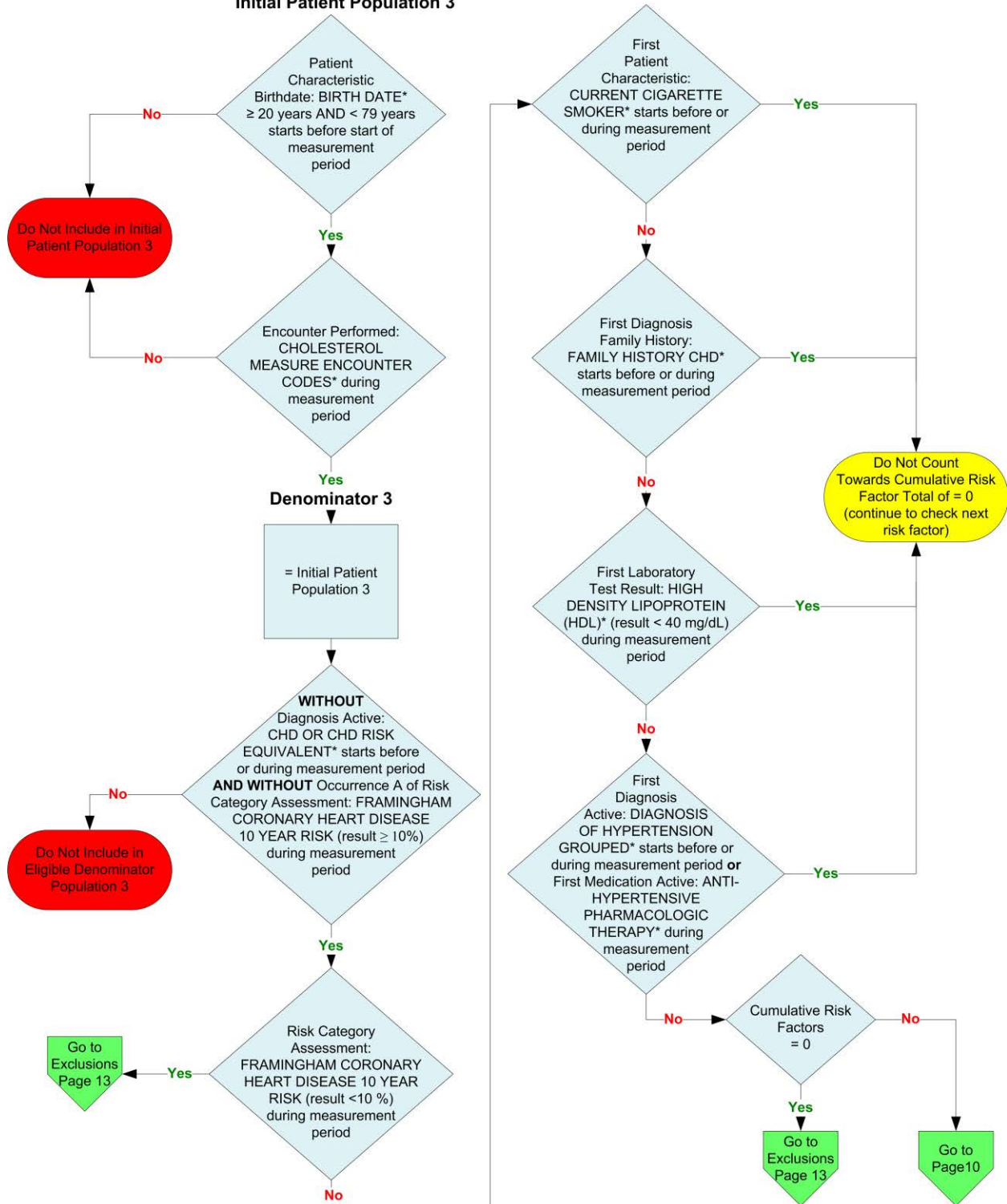
**SAMPLE CALCULATION:** *Combination of Initial Patient Population 2; Denominator 2; Numerator 2*

**Performance Rate=**

$$\frac{\text{Numerator (a}^1 + \text{a}^2 = 4 \text{ patients)}}{\text{Denominator (b=8 patients) – Denominator Exclusions (c}^1 + \text{c}^2 = 2 \text{ patients) – Denominator Exceptions (d = 1 patient)}} = 80.00\%$$



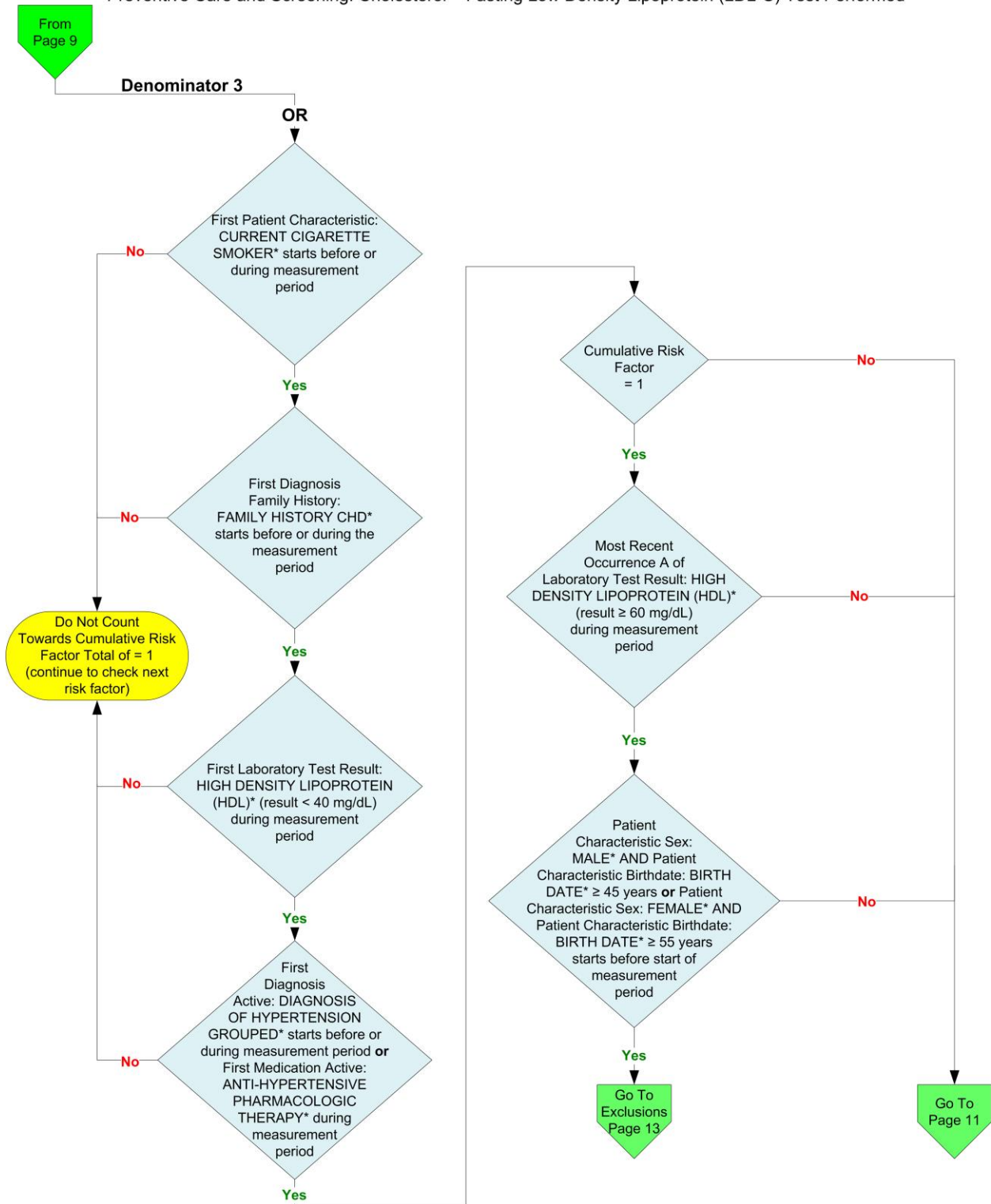
2014 eCQM Flow  
Measure Identifier: CMS61v4  
Preventive Care and Screening: Cholesterol – Fasting Low Density Lipoprotein (LDL-C) Test Performed  
**Initial Patient Population 3**



\*Please refer to the specific section of the eCQM to identify the QDM data elements and associated value sets for use in reporting the eCQM.

2014 eCQM Flow  
Measure Identifier: CMS61v4

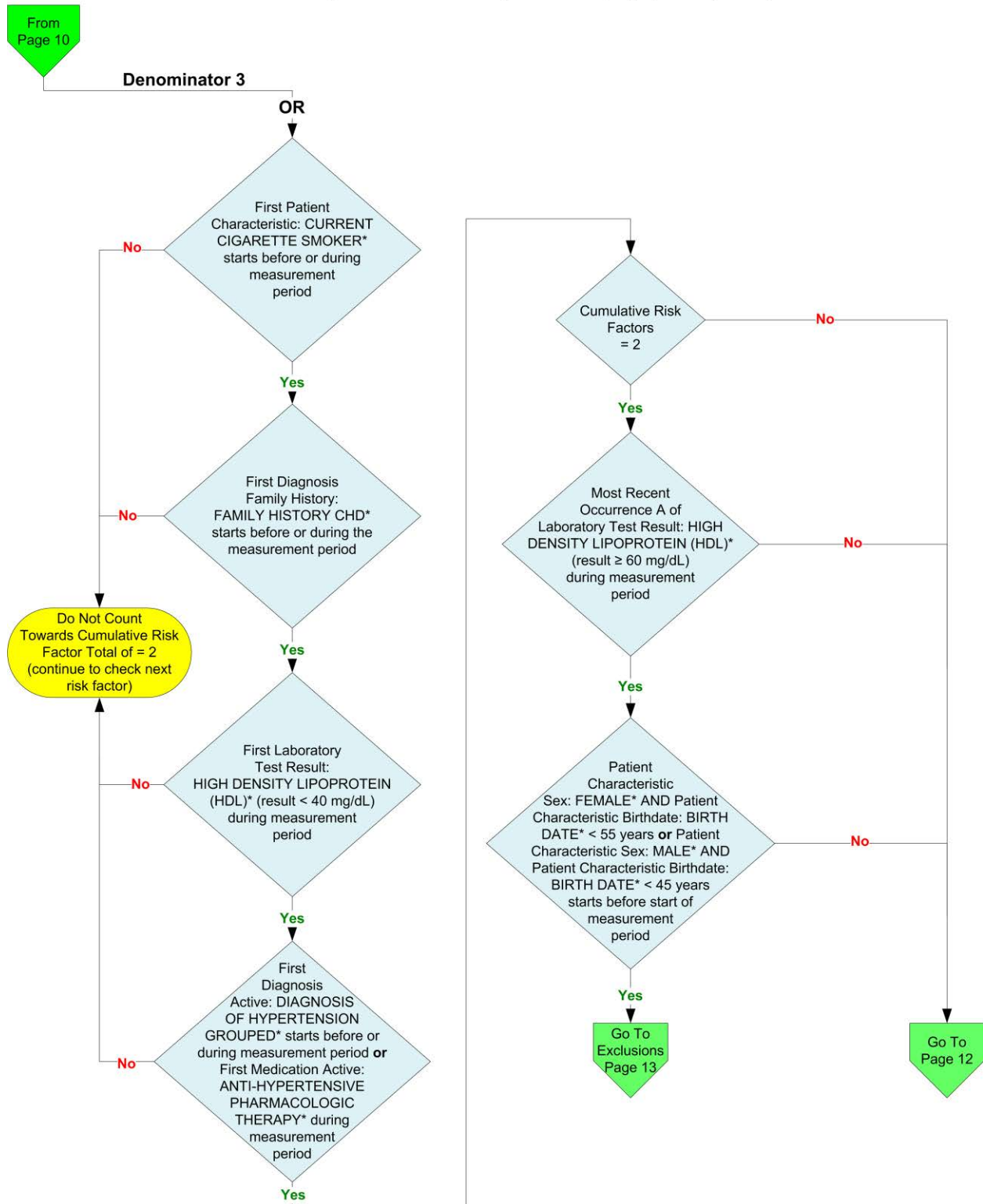
Preventive Care and Screening: Cholesterol – Fasting Low Density Lipoprotein (LDL-C) Test Performed



\*Please refer to the specific section of the eCQM to identify the QDM data elements and associated value sets for use in reporting the eCQM.

2014 eCQM Flow  
Measure Identifier: CMS61v4

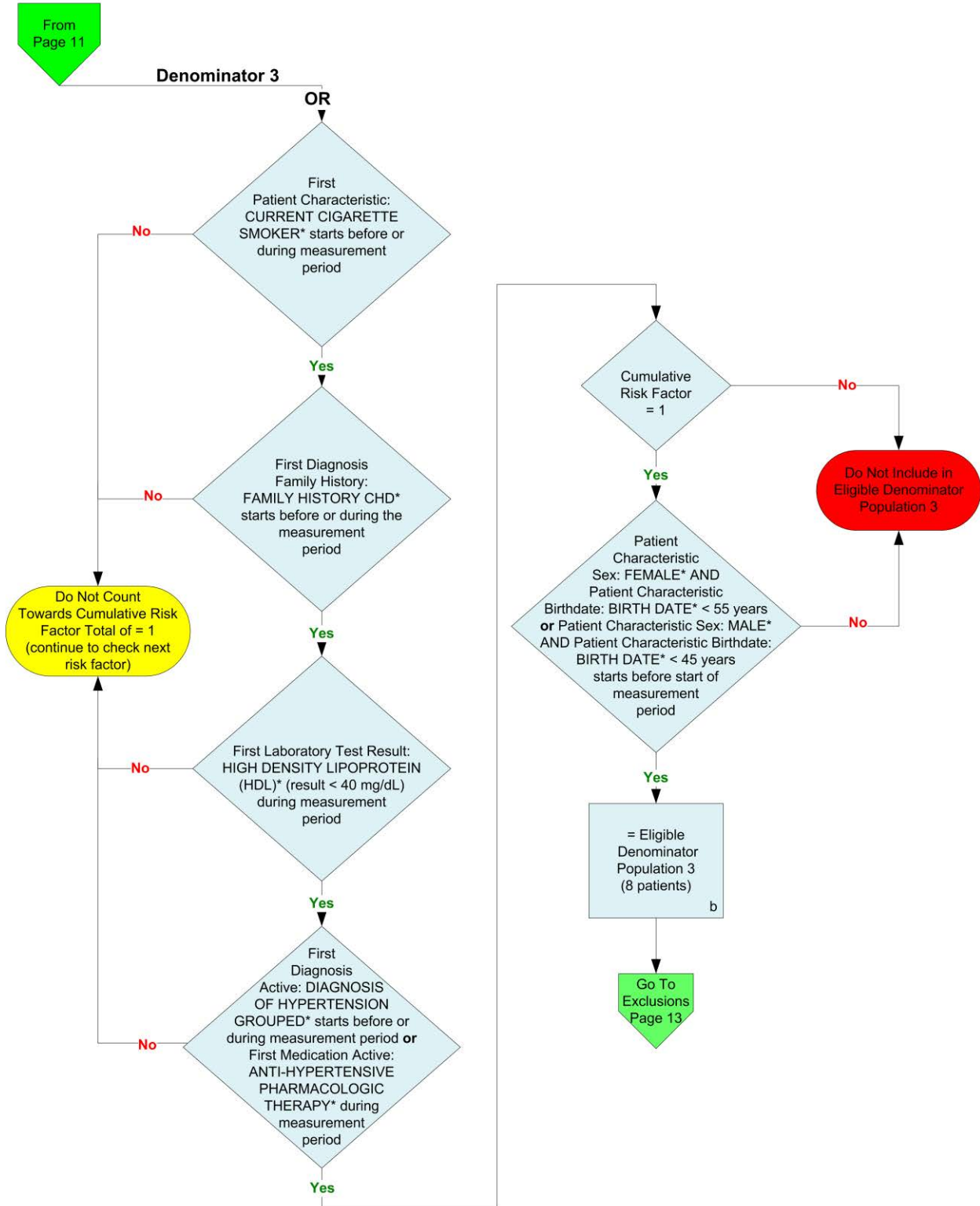
Preventive Care and Screening: Cholesterol – Fasting Low Density Lipoprotein (LDL-C) Test Performed



\*Please refer to the specific section of the eCQM to identify the QDM data elements and associated value sets for use in reporting the eCQM.

2014 eCQM Flow  
Measure Identifier: CMS61v4

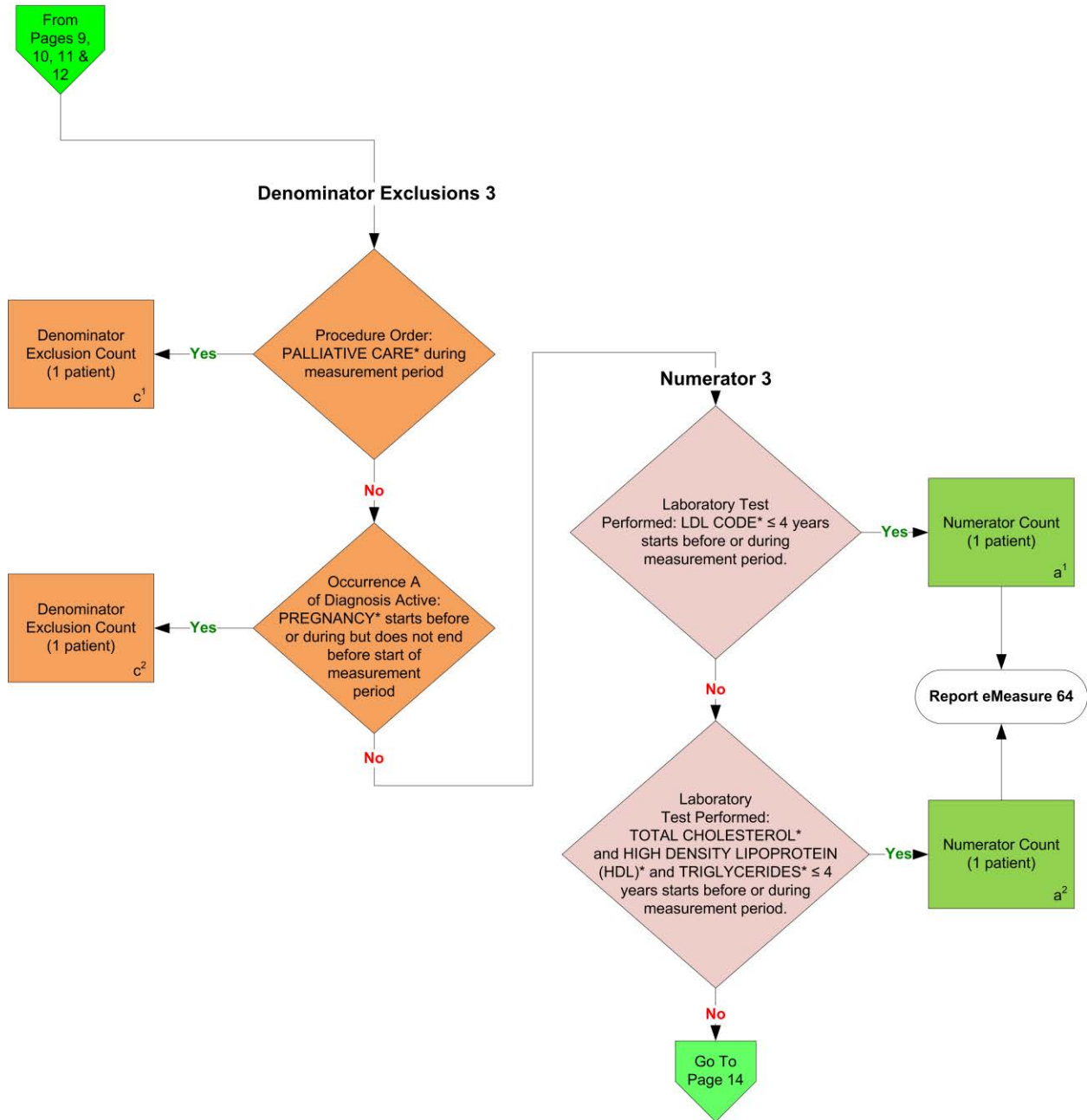
Preventive Care and Screening: Cholesterol – Fasting Low Density Lipoprotein (LDL-C) Test Performed



\*Please refer to the specific section of the eCQM to identify the QDM data elements and associated value sets for use in reporting the eCQM.



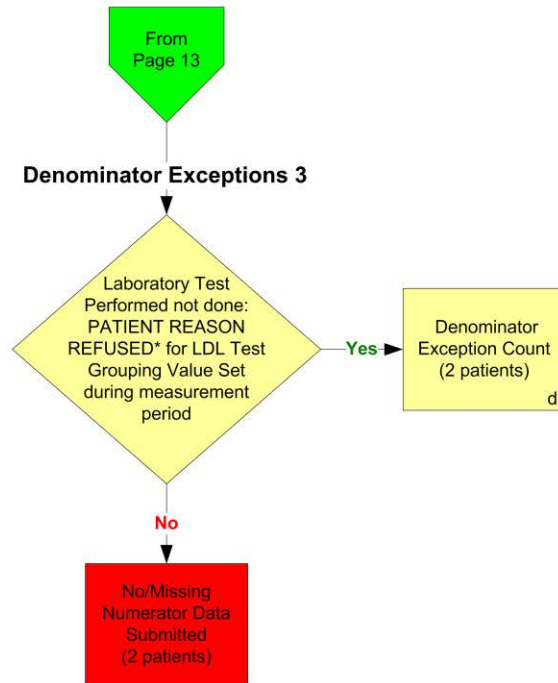
2014 eCQM Flow  
Measure Identifier: CMS61v4  
Preventive Care and Screening: Cholesterol – Fasting Low Density Lipoprotein (LDL-C) Test Performed



\*Please refer to the specific section of the eCQM to identify the QDM data elements and associated value sets for use in reporting the eCQM.



2014 eCQM Flow  
Measure Identifier: CMS61v4  
Preventive Care and Screening: Cholesterol – Fasting Low Density Lipoprotein (LDL-C) Test Performed



\*Please refer to the specific section of the eCQM to identify the QDM data elements and associated value sets for use in reporting the eCQM.

**SAMPLE CALCULATION:** *Combination of Initial Patient Population 3; Denominator 3; Numerator 3*

**Performance Rate=**

$$\frac{\text{Numerator } (a^1 + a^2 = 2 \text{ patients})}{\text{Denominator } (b=8 \text{ patients}) - \text{Denominator Exclusions } (c^1 + c^2 = 2 \text{ patients}) - \text{Denominator Exceptions } (d = 2 \text{ patients})} = 50.00\%$$

2014 eCQM Flows  
Measure Identifier: CMS61v4  
Preventive Care and Screening: Cholesterol – Fasting Low Density Lipoprotein (LDL-C)  
Test Performed

*This eCQM requires the reporting of three Performance Rates*

Please refer to the specific section of the eCQM to identify the QDM data elements and associated value sets for use in reporting the eCQM.

1. Start Initial Patient Population 1
2. Check Patient Characteristic Birthdate:
  - a. If QDM data element, BIRTH DATE, is greater than or equal to 20 years AND less than 79 years starts before start of the measurement period equals No, do not include in Initial Patient Population 1 and stop processing.
  - b. If QDM data element, BIRTH DATE, is greater than or equal to 20 years AND less than 79 years starts before start of the measurement period equals Yes, continue processing and proceed to check Encounter Performed.
3. Check Encounter Performed:
  - a. If QDM data element, CHOLESTEROL MEASURE ENCOUNTER CODES, during the measurement period equals Yes, continue processing and proceed to Denominator 1.
  - b. If QDM data element, CHOLESTEROL MEASURE ENCOUNTER CODES, during the measurement period equals No, do not include in Initial Patient Population 1 and stop processing.
4. Start Denominator 1
  - a. Denominator 1 equals Initial Patient Population 1, proceed to check Diagnosis Active.
5. Check Diagnosis Active:
  - a. If QDM data element, CHD OR CHD RISK EQUIVALENT, starts before or during measurement period equals Yes, include in the Eligible Denominator Population 1.
  - b. If QDM data element, CHD OR CHD RISK EQUIVALENT, starts before or during measurement period equals No, proceed to check Risk Category Assessment.
6. Check Risk Category Assessment:
  - a. If QDM data element, FRAMINGHAM CORONARY HEART DISEASE 10 YEAR RISK (result greater than 20%), during measurement period, equals Yes, include in the Eligible Denominator Population 1.
  - b. If QDM data element, FRAMINGHAM CORONARY HEART DISEASE 10 YEAR RISK (result greater than 20%), during measurement period, equals No, do not include in the Eligible Denominator Population 1.
7. Start Eligible Denominator Population 1

- a. Eligible Denominator Population 1 is represented by letter B in the sample calculation listed at the end of Population 1. Letter B equals 10 patients in the sample calculation.
8. Start Denominator Exclusions 1
9. Check Procedure Order:
  - a. If QDM data element, PALLIATIVE CARE, during measurement period equals Yes, include in Denominator Exclusions count. Denominator Exclusions are represented by the letter C<sup>1</sup> in the sample calculation listed at the end of Population 1. Letter C<sup>1</sup> equals 1 patient in the sample calculation.
  - b. If QDM data element, PALLIATIVE CARE, during the measurement period equals No, proceed to check Diagnosis Active.
10. Check Diagnosis Active:
  - a. If Occurrence A of QDM data element, PREGNANCY, starts before or during but does not end before start of measurement period equals Yes, include in Denominator Exclusions count. Denominator Exclusions are represented by the letter C<sup>2</sup> in the sample calculation listed at the end of Population 1. Letter C<sup>2</sup> equals 1 patient in the sample calculation.
  - b. If Occurrence A of QDM data element, PREGNANCY, starts before or during but does not end before start of measurement period equals No, proceed to Numerator.
11. Start Numerator 1
12. Check Laboratory Test Performed:
  - a. If QDM data element, LDL CODE, during measurement period equals Yes, include in Numerator count. Numerators are represented by the letter A<sup>1</sup> in the sample calculation listed at the end of Population 1. Letter A<sup>1</sup> equals 2 patients in the sample calculation.
  - b. If QDM data element, LDL CODE, during measurement period equals No, proceed to check Laboratory test Performed.
13. Check Laboratory Test Performed:
  - a. If QDM data element, TOTAL CHOLESTEROL, and QDM data element, HIGH DENSITY LIPOPROTEIN (HDL), and QDM data element, TRIGLYCERIDES, during measurement period equals Yes, include in Numerator count. Numerator is represented by the letter A<sup>2</sup> in the sample calculation listed at the end of Population 1. Letter A<sup>2</sup> equals 2 patients in the sample calculation.
  - b. If QDM data element, TOTAL CHOLESTEROL, and QDM data element, HIGH DENSITY LIPOPROTEIN (HDL), and QDM data element, TRIGLYCERIDES, during measurement period equals No, proceed to Denominator Exceptions 1.
14. Start Denominator Exceptions 1
15. Check Laboratory Test Performed not done:
  - a. If QDM data element, PATIENT REASON REFUSED, for LDL Test Grouping Value Set during measurement period equals Yes, include in Denominator Exceptions count. Denominator Exceptions are represented by the letter D in the

sample calculation listed at the end of Population 1. Letter D equals 2 patients in the sample calculation.

- b. If QDM data element, PATIENT REASON REFUSED, for LDL Code Grouping Value Set during measurement period equals No, include in No/Missing Numerator Data Submitted count and stop processing.

**SAMPLE CALCULATION:** *Combination of Initial Patient Population 1; Denominator 1; Numerator 1*

**Performance Rate=**

Numerator ( $a^1 + a^2 = 4$  patients)

÷

Denominator ( $b=10$  patients) – Denominator Exclusions ( $c^1 + c^2 = 2$  patients) – Denominator Exceptions ( $d = 2$  patients)  
= **66.67%**

1. Start Initial Patient Population 2

2. Check Patient Characteristic Birthdate:

- a. If QDM data element, BIRTH DATE, is greater than or equal to 20 years AND less than 79 years before start of the measurement period equals No, do not include in Initial Patient Population 2 and stop processing.
- b. If QDM data element, BIRTH DATE, is greater than or equal to 20 years AND less than 79 years before start of the measurement period equals Yes, continue processing and proceed to check Encounter Performed.

3. Check Encounter Performed:

- a. If QDM data element, CHOLESTEROL MEASURE ENCOUNTER CODES, during measurement period equals Yes, continue processing and proceed to Denominator 2.
- b. If QDM data element, CHOLESTEROL MEASURE ENCOUNTER CODES, during measurement period equals No, do not include in Initial Patient Population 2 and stop processing.

4. Start Denominator 2

- a. Denominator 2 equals Initial Patient Population 2, proceed to check Diagnosis Active.

5. Check Diagnosis Active:

- a. If WITHOUT QDM data element, CHD OR CHD RISK EQUIVALENT, starts before or during measurement period, and WITHOUT Risk Category Assessment QDM data element, FRAMINGHAM CORONARY HEART DISEASE 10 YEAR RISK (result greater than 20 percent) during measurement period equals Yes, proceed to check Risk Category Assessment.
- b. If WITHOUT QDM data element, CHD OR CHD RISK EQUIVALENT, starts before or during measurement period, and WITHOUT Risk Category Assessment QDM data element, FRAMINGHAM CORONARY HEART DISEASE 10 YEAR RISK (result greater than 20 percent) during measurement period equals No, do not include in Denominator Eligible Population 2 and stop processing.

6. Check Risk Category Assessment:

- a. If Occurrence A of QDM data element, FRAMINGHAM CORONARY HEART DISEASE 10 YEAR RISK (result greater than or equal to 10 percent) during measurement period equals Yes, proceed to Denominator Exclusions 2.
  - b. If Occurrence A of QDM data element, FRAMINGHAM CORONARY HEART DISEASE 10 YEAR RISK (result greater than or equal to 10 percent) during measurement period equals No, go to check Patient Characteristic.
7. Check Patient Characteristic:
  - a. If First QDM data element, CURRENT CIGARETTE SMOKER, starts before or during measurement period equals Yes, include in cumulative risk factor total of greater than or equal to 3 and proceed to check Diagnosis Family History.
  - b. If First QDM data element, CURRENT CIGARETTE SMOKER, starts before or during measurement period equals No, do not count towards cumulative risk factor total of greater than or equal to 3 and proceed to check Diagnosis Family History.
8. Check Diagnosis Family History:
  - a. If First QDM data element, FAMILY HISTORY CHD, starts before or during measurement period equals Yes, include in cumulative risk factor total of greater than or equal to 3 and proceed to check Laboratory Test Result.
  - b. If First QDM data element, FAMILY HISTORY CHD, starts before or during the measurement period equals No, do not count towards cumulative risk factor total of greater than or equal to 3 and proceed to check Laboratory Test Result.
9. Check Laboratory Test Result:
  - a. If First QDM data element, HIGH DENSITY LIPOPROTEIN (HDL) (result less than 40 mg/dL), during measurement period equals Yes, include in cumulative risk factor total of greater than or equal to 3 and proceed to check Diagnosis Active or Medication Active.
  - b. If First QDM data element HIGH DENSITY LIPOPROTEIN (HDL) (result less than 40 mg/dL) during measurement period equals No, do not count towards cumulative risk factor total of greater than or equal to 3 and proceed to check Diagnosis Active or Medication Active.
10. Check Diagnosis Active or Medication Active:
  - a. If First QDM data element, DIAGNOSIS OF HYPERTENSION GROUPED, starts before or during measurement period, or, if First QDM data element ANTI-HYPERTENSIVE PHARMACOLOGIC THERAPY during measurement period equals Yes, include in cumulative risk factor total of greater than or equal to 3 and proceed to check cumulative risk factor total.
  - b. If First QDM data element, DIAGNOSIS OF HYPERTENSION GROUPED, starts before or during measurement period, or, if First QDM data element ANTI-HYPERTENSIVE PHARMACOLOGIC THERAPY during measurement period equals No, do not count towards cumulative risk factor total of greater than or equal to 3 and proceed to check cumulative risk factor total.
11. Check cumulative risk factor total:
  - a. If cumulative risk factor total equals greater than or equal to 3 proceed to Denominator Exclusions 2.



- b. If cumulative risk factor total equals less than 3 proceed to check Patient Characteristic.
- 12. Check Patient Characteristic:
  - a. If First QDM data element, CURRENT CIGARETTE SMOKER, starts before or during measurement period equals Yes, include in cumulative risk factor total equal to 2 and proceed to check Diagnosis Family History.
  - b. If First QDM data element, CURRENT CIGARETTE SMOKER, starts before or during measurement period equals No, do not count towards cumulative risk factor total of equal to 2 and proceed to check Diagnosis Family History.
- 13. Check Diagnosis Family History:
  - a. If First QDM data element, FAMILY HISTORY CHD, starts before or during the measurement period equals Yes, include in cumulative risk factor total of equal to 2 and proceed to check Laboratory Test Result.
  - b. If First QDM data element, FAMILY HISTORY CHD, starts before or during the measurement period equals No, do not count towards cumulative risk factor total of equal to 2 and proceed to check Laboratory Test Result.
- 14. Check Laboratory Test Result:
  - a. If First QDM data element, HIGH DENSITY LIPOPROTEIN (HDL) (result less than 40 mg/dL), during measurement period equals Yes, include in cumulative risk factor total of equal to 2 and proceed to check Diagnosis Active or Medication Active.
  - b. If First QDM data element, HIGH DENSITY LIPOPROTEIN (HDL) (result less than 40 mg/dL), during measurement period equals No, do not count towards cumulative risk factor total of equal to 2 and proceed to check Diagnosis Active or Medication Active.
- 15. Check Diagnosis Active or Medication Active:
  - a. If First QDM data element, DIAGNOSIS OF HYPERTENSION GROUPED, starts before or during measurement period, or, if First QDM data element, ANTI-HYPERTENSIVE PHARMACOLOGIC THERAPY, during measurement period equals Yes, include in cumulative risk factor total of equal to 2 and proceed to check cumulative risk factor total.
  - b. If First QDM data element, DIAGNOSIS OF HYPERTENSION GROUPED, starts before or during measurement period, or, if First QDM data element, ANTI-HYPERTENSIVE PHARMACOLOGIC THERAPY, during measurement period equals No, do not count towards cumulative risk factor total of equal to 2 and proceed to check cumulative risk factor total.
- 16. Check cumulative risk factor total:
  - a. If the cumulative risk factor total equals 2 proceed to check Laboratory Test Performed.
  - b. If the cumulative risk factor total does not equal 2 proceed to check Patient Characteristic.
- 17. Check Laboratory Test Performed:
  - a. If WITHOUT QDM data element, HIGH DENSITY LIPOPROTEIN (HDL), during measurement period, or, if Most Recent Occurrence A of QDM data element

- HIGH DENSITY LIPOPROTEIN (HDL) (result less than 60 mg/dL) during measurement period equals Yes, proceed to Denominator Exclusions 2.
- b. If WITHOUT QDM data element, HIGH DENSITY LIPOPROTEIN (HDL), during measurement period, or, if Most Recent Occurrence A of QDM data element HIGH DENSITY LIPOPROTEIN (HDL) (result less than 60 mg/dL) during measurement period equals No, proceed to check Patient Characteristic.
18. Check Patient Characteristic:
- a. If First QDM data element, CURRENT CIGARETTE SMOKER, starts before or during measurement period equals Yes, include in cumulative risk factor total equal to 1 and proceed to check Diagnosis Family History.
- b. If First QDM data element, CURRENT CIGARETTE SMOKER, starts before or during measurement period equals No, do not count towards cumulative risk factor total of equal to 1 and proceed to check Diagnosis Family History.
19. Check Diagnosis Family History:
- a. If First QDM data element, FAMILY HISTORY CHD, starts before or during measurement period equals Yes, include in cumulative risk factor total equal to 1 and proceed to check Laboratory Test Result.
- b. If First QDM data element, FAMILY HISTORY CHD, starts before or during measurement period equals No, do not count towards cumulative risk factor total of equal to 1 and proceed to check Laboratory Test Result.
20. Check Laboratory Test Result:
- a. If First QDM data element, HIGH DENSITY LIPOPROTEIN (HDL) (result less than 40 mg/dL), during measurement period equals Yes, include in cumulative risk factor total equal to 1 and proceed to check Diagnosis Active or Medication Active.
- b. If First QDM data element, HIGH DENSITY LIPOPROTEIN (HDL) (result less than 40 mg/dL), during measurement period equals No, do not count towards cumulative risk factor total of equal to 1 and proceed to check next Diagnosis Active or Medication Active.
21. Check Diagnosis Active or Medication Active:
- a. If First QDM data element, DIAGNOSIS OF HYPERTENSION GROUPED, starts before or during measurement period, or, if First QDM data element, ANTI-HYPERTENSIVE PHARMACOLOGIC THERAPY, during measurement period equals Yes, include in cumulative risk factor total equal to 1 and proceed to check cumulative risk factor total.
- b. If First QDM data element, DIAGNOSIS OF HYPERTENSION GROUPED, starts before or during measurement period, or, if First QDM data element, ANTI-HYPERTENSIVE PHARMACOLOGIC THERAPY, during measurement period equals No, do not count towards cumulative risk factor total of equal to 1 and proceed to check cumulative risk factor total.
22. Check cumulative risk factor total:
- a. If the cumulative risk factor total equals 1 proceed to check Laboratory Test Performed.
- b. If the cumulative risk factor total does not equal 1 proceed to check next Patient Characteristic.

23. Check Laboratory Test Performed:
- a. If WITHOUT QDM data element, HIGH DENSITY LIPOPROTEIN (HDL), during measurement period, or, if Most Recent Occurrence A of QDM data element, HIGH DENSITY LIPOPROTEIN (HDL) (result less than 60 mg/dL), during measurement period equals Yes, proceed to check Patient Characteristic Sex and Patient Characteristic Birthdate.
  - b. If WITHOUT QDM data element, HIGH DENSITY LIPOPROTEIN (HDL), during measurement period, or, if Most Recent Occurrence A of QDM data element, HIGH DENSITY LIPOPROTEIN (HDL) (result less than 60 mg/dL), during measurement period equals No, proceed to check Patient Characteristic.
24. Check Patient Characteristic Sex and Patient Characteristic Birthdate:
- a. If QDM data element, MALE, and QDM data element, BIRTH DATE, greater than or equal to 45 years, or, if QDM data element, FEMALE, and, QDM data element, BIRTH DATE, greater than or equal to 55 years starts before start of measurement period equals Yes, proceed to Denominator Exclusions 2.
  - b. If QDM data element, MALE, and Patient Characteristic QDM data element, BIRTH DATE, greater than or equal to 45 years, or, if QDM data element, FEMALE, and, QDM data element, BIRTH DATE, greater than or equal to 55 years starts before start of measurement period equals No, proceed to check Patient Characteristic.
25. Check Patient Characteristic:
- a. If First QDM data element, CURRENT CIGARETTE SMOKER, starts before or during measurement period equals Yes, include in cumulative risk factor total equal to 2 and proceed to check Diagnosis Family History.
  - b. If First QDM data element, CURRENT CIGARETTE SMOKER, starts before or during measurement period equals No, do not count towards cumulative risk factor total of equal to 2 and proceed to check Diagnosis Family History.
26. Check Diagnosis Family History:
- a. If First QDM data element, FAMILY HISTORY CHD, starts before or during measurement period equals Yes, include in cumulative risk factor total of equal to 2 and proceed to check Laboratory Test Result.
  - b. If First QDM data element, FAMILY HISTORY CHD, starts before or during measurement period equals No, do not count towards cumulative risk factor total of equal to 2 and proceed to check Laboratory Test Result.
27. Check Laboratory Test Result:
- a. If First QDM data element, HIGH DENSITY LIPOPROTEIN (HDL) (result less than 40 mg/dL), during measurement period equals Yes, include in cumulative risk factor total of equal to 2 and proceed to check cumulative risk factor total.
  - b. If First QDM data element HIGH DENSITY LIPOPROTEIN (HDL) (result less than 40 mg/dL) during measurement period equals No, do not count towards cumulative risk factor total of equal to 2 and proceed to check cumulative risk factor total.

28. Check Diagnosis Active or Medication Active:
- If the First QDM data element, DIAGNOSIS OF HYPERTENSION GROUPED, starts before or during measurement period, or, if First QDM data element, ANTI-HYPERTENSIVE PHARMACOLOGIC THERAPY, during measurement period equals Yes, include in cumulative risk factor total equal to 2 and proceed to check cumulative risk factor total.
  - If the First QDM data element, DIAGNOSIS OF HYPERTENSION GROUPED, starts before or during measurement period, or, if First QDM data element, ANTI-HYPERTENSIVE PHARMACOLOGIC THERAPY, during measurement period equals No, do not include in eligible denominator population 2 and proceed to check cumulative risk factor total.
29. Check cumulative risk factor total:
- If cumulative risk factor total equals 2 proceed to check Patient Characteristic Sex and Patient Characteristic Birthdate.
  - If cumulative risk factor total does not equal 2, do not include in Eligible Population 2 and proceed to Initial Patient Population 3.
30. Check Patient Characteristic Sex and Patient Characteristic Birthdate:
- If QDM data element, MALE, and QDM data element, BIRTH DATE, greater than or equal to 45 years, or, if QDM data element, FEMALE, and QDM data element, BIRTH DATE, greater than or equal to 55 years starts before start of measurement period equals Yes, include in Eligible Denominator Population 2 and proceed to Eligible Denominator Population 2.
  - If QDM data element MALE, and QDM data element, BIRTH DATE, greater than or equal to 45 years, or, if QDM data element, FEMALE, and QDM data element, BIRTH DATE, greater than or equal to 55 years starts before start of measurement period equals No, do not include in Eligible Population 2 and proceed to check Initial Patient Population 3.
31. Start Eligible Denominator Population 2
- Eligible Denominator Population 2 is represented by letter B in the sample calculation listed at the end of Population 2. Letter B equals 8 patients in the sample calculation.
32. Start Denominator Exclusions 2
33. Check Procedure Order:
- If the QDM data element, PALLIATIVE CARE, during the measurement period equals Yes, include in Denominator Exclusions count. Denominator Exclusions are represented by the letter C<sup>1</sup> in the sample calculation listed at the end of Population 2. Letter C<sup>1</sup> equals 1 patient in the sample calculation.
  - If the QDM data element, PALLIATIVE CARE, during the measurement period equals No, proceed to check Diagnosis Active.
34. Check Diagnosis Active:
- If Occurrence A of QDM data element, PREGNANCY, starts before or during but does not end before start of measurement period equals Yes, include in Denominator Exclusions count. Denominator Exclusions are represented by the letter C<sup>2</sup> in the sample calculation listed at the end of Population 2. Letter C<sup>2</sup> equals 1 patient in the sample calculation.

- b. If Occurrence A of QDM data element, PREGNANCY, starts before or during but does not end before start of measurement period equals No, proceed to Numerator 2.

35. Start Numerator 2

36. Check Laboratory Test Performed:

- a. If QDM data element, LDL CODE, during measurement period equals Yes, include in Numerator count. Numerator is represented by the letter A<sup>1</sup> in the sample calculation listed at the end of Population 2. Letter A<sup>1</sup> equals 2 patients in the sample calculation.
- b. If QDM data element, LDL CODE, during measurement period equals No, proceed to check Laboratory Test Performed.

37. Check Laboratory Test Performed:

- a. If QDM data element, TOTAL CHOLESTEROL, and QDM data element, HIGH DENSITY LIPOPROTEIN (HDL), and QDM data element, TRIGLYCERIDES during the measurement period equals Yes, include in Numerator count. Numerator 2 is represented by the letter A<sup>2</sup> in the sample calculation listed at the end of Population 2. Letter A<sup>2</sup> equals 2 patients in the sample calculation.
- b. If QDM data element, TOTAL CHOLESTEROL, and QDM data element, HIGH DENSITY LIPOPROTEIN (HDL), and QDM data element, TRIGLYCERIDES during the measurement period equals No, proceed to Denominator Exceptions 2.

38. Start Denominator Exceptions 2

39. Check Laboratory Test Performed not done:

- a. If QDM data element, PATIENT REASON REFUSED, for LDL Code Grouping Value Set during measurement period equals Yes, include in Denominator Exceptions count. Exceptions are represented by the letter D in the sample calculation listed at the end of Population 2. Letter D equals 1 patient in the sample calculation.
- b. If QDM data element, PATIENT REASON REFUSED, for LDL Code Grouping Value Set during the measurement period equals No, include in No/Missing Numerator Data Submitted count. Stop Processing.

**SAMPLE CALCULATION:** *Combination of Initial Patient Population 2; Denominator 2; Numerator 2*

**Performance Rate=**

Numerator ( $a^1 + a^2 = 4$  patients)

÷

Denominator ( $b=8$  patients) – Denominator Exclusions ( $c^1 + c^2 = 2$  patients) – Denominator Exceptions ( $d=1$  patient)  
= **80.00%**



1. Start Initial Patient Population 3
2. Check Patient Characteristic Birthdate:
  - a. If QDM data element, BIRTH DATE, is greater than or equal to 20 years AND less than 79 years before start of the measurement period equals No, do not include in Initial Patient Population 3 and stop processing.
  - b. If QDM data element, BIRTH DATE, is greater than or equal to 20 years AND less than 79 years before start of the measurement period equals Yes, continue processing and proceed to check Encounter Performed.
3. Check Encounter Performed:
  - a. If QDM data element, CHOLESTEROL MEASURE ENCOUNTER CODES, during the measurement period equals Yes, continue processing and proceed to check Denominator 3.
  - b. If QDM data element, CHOLESTEROL MEASURE ENCOUNTER CODES, during the measurement period equals No, do not include in Initial Patient Population 3 and stop processing.
4. Start Denominator 3
  - a. Denominator 3 equals Initial Patient Population 3. Proceed to check Diagnosis Active.
5. Check Diagnosis Active:
  - a. If WITHOUT QDM data element, CHD OR CHD RISK EQUIVALENT, starts before or during measurement period, and WITHOUT Occurrence A of Risk Category Assessment QDM data element, FRAMINGHAM CORONARY HEART DISEASE 10 YEAR RISK (result greater than or equal to 10 percent) during measurement period equals Yes, proceed to check Risk Category Assessment.
  - b. If WITHOUT QDM data element, CHD OR CHD RISK EQUIVALENT, starts before or during measurement period, and WITHOUT Occurrence A of Risk Category Assessment QDM data element, FRAMINGHAM CORONARY HEART DISEASE 10 YEAR RISK (result greater than or equal to 10 percent), during measurement period equals No, do not include in Denominator Eligible Population 3 and stop processing.
6. Check Risk Category Assessment:
  - a. If QDM data element, FRAMINGHAM CORONARY HEART DISEASE 10 YEAR RISK (result less than 10 percent), during measurement period equals Yes, proceed to Denominator Exclusions 3.
  - b. If QDM data element, FRAMINGHAM CORONARY HEART DISEASE 10 YEAR RISK (result less than 10 percent), during measurement period equals No, proceed to check Patient Characteristic.
7. Check Patient Characteristic:
  - a. If First QDM data element, CURRENT CIGARETTE SMOKER, starts before or during measurement period equals Yes, do not include in cumulative risk factor equal to 0 and proceed to check Diagnosis Family History.

- b. If First QDM data element, CURRENT CIGARETTE SMOKER, starts before or during measurement period equals No, proceed to check Diagnosis Family History.
- 8. Check Diagnosis Family History:
  - a. If First QDM data element, FAMILY HISTORY CHD, starts before or during measurement period equals Yes, do not include in cumulative risk factor total of equal to 0 and proceed to check Laboratory Test Result.
  - b. If First QDM data element, FAMILY HISTORY CHD, starts before or during measurement period equals No, proceed to check Laboratory Test Result.
- 9. Check Laboratory Test Result:
  - a. If First QDM data element, HIGH DENSITY LIPOPROTEIN (HDL) (result less than 40 mg/dL), during measurement period equals Yes, do not include in cumulative risk factor total of equal to 0 and proceed to check Diagnosis Active or Medication Active.
  - b. If First QDM data element, HIGH DENSITY LIPOPROTEIN (HDL) (result less than 40 mg/dL), during measurement period equals No, proceed to check Diagnosis Active or Medication Active.
- 10. Check Diagnosis Active or Medication Active:
  - a. If First QDM data element, DIAGNOSIS OF HYPERTENSION GROUPED, starts before or during measurement period, or, if First QDM data element, ANTI-HYPERTENSIVE PHARMACOLOGIC THERAPY, during measurement period equals Yes, do not include in cumulative risk factor total of equal to 0 and proceed to check criteria for cumulative risk factor equal to 0.
  - b. If First QDM data element, DIAGNOSIS OF HYPERTENSION GROUPED, starts before or during measurement period, or, if First QDM data element, ANTI-HYPERTENSIVE PHARMACOLOGIC THERAPY, during measurement period equals No, proceed to check cumulative risk factor total.
- 11. Check cumulative risk factor total:
  - a. If the cumulative risk factor total equals 0 proceed to Denominator Exclusions 3.
  - b. If the cumulative risk factor total equals greater than 0 proceed to check Patient Characteristic.
- 12. Check Patient Characteristic:
  - a. If First QDM data element, CURRENT CIGARETTE SMOKER, starts before or during the measurement period equals Yes, include in cumulative risk factor total equal to 1 and proceed to check Diagnosis Family History.
  - b. If First QDM data element, CURRENT CIGARETTE SMOKER, starts before or during the measurement period equals No, do not count towards cumulative risk factor total of equal to 1 and proceed to check Diagnosis Family History.
- 13. Check Diagnosis Family History:
  - a. If First QDM data element, FAMILY HISTORY CHD, starts before or during the measurement period equals Yes, include in cumulative risk factor total equal to 1 and proceed to check Laboratory Test Result.
  - b. If First QDM data element, FAMILY HISTORY CHD, starts before or during the measurement period equals No, do not count towards cumulative risk factor total of equal to 1 and proceed to check Laboratory Test Result.

14. Check Laboratory Test Result:
- a. If First QDM data element, HIGH DENSITY LIPOPROTEIN (HDL) (result less than 40 mg/dL), during measurement period equals Yes, include in cumulative risk factor total equal to 1 and proceed to check Diagnosis Active or Medication Active.
  - b. If First QDM data element, HIGH DENSITY LIPOPROTEIN (HDL) (result less than 40 mg/dL), during measurement period equals No, do not count towards cumulative risk factor total of equal to 1 and proceed to check Diagnosis Active or Medication Active.
15. Check Diagnosis Active or Medication Active:
- a. If First QDM data element, DIAGNOSIS OF HYPERTENSION GROUPED, starts before or during measurement period, or, if First QDM data element, ANTI-HYPERTENSIVE PHARMACOLOGIC THERAPY, during measurement period equals Yes, include in cumulative risk factor total equal to 1 and proceed to check cumulative risk factor total.
  - b. If First QDM data element, DIAGNOSIS OF HYPERTENSION GROUPED, starts before or during measurement period, or, if First QDM data element, ANTI-HYPERTENSIVE PHARMACOLOGIC THERAPY, during measurement period equals No, do not count towards cumulative risk factor total of equal to 1 and proceed to check cumulative risk factor total.
16. Check cumulative risk factor total:
- a. If the cumulative risk factor total equals 1 proceed to check Laboratory Test Result.
  - b. If the cumulative risk factor total does not equal 1 proceed to check Patient Characteristic.
17. Check Laboratory Test Result:
- a. If Most Recent Occurrence A of QDM data element, HIGH DENSITY LIPOPROTEIN (HDL) (result greater than or equal to 60 mg/dL), during measurement period equals Yes, proceed to check Patient Characteristic Sex and Patient Characteristic Birthdate.
  - b. If Most Recent Occurrence A of QDM data element, HIGH DENSITY LIPOPROTEIN (HDL) (result greater than or equal to 60 mg/dL), during measurement period equals No, proceed to check Patient Characteristic.
18. Check Patient Characteristic Sex and Patient Characteristic Birthdate:
- a. If QDM data element, MALE, and QDM data element, BIRTH DATE, greater than or equal to 45 years, or, if QDM data element, FEMALE, and QDM data element, BIRTH DATE, greater than or equal to 55 years starts before start of measurement period equals Yes, include in Eligible Denominator Population 3 and proceed to Denominator Exclusions 3.
  - b. If QDM data element, MALE, and QDM data element, BIRTH DATE, greater than or equal to 45 years, or, if QDM data element, FEMALE, and QDM data element, BIRTH DATE, greater than or equal to 55 years starts before start of measurement period equals No, proceed to check Patient Characteristic.

19. Check Patient Characteristic:

- a. If First QDM data element, CURRENT CIGARETTE SMOKER, starts before or during the measurement period equals Yes, include in cumulative risk factor total equal to 2 and proceed to check Diagnosis Family History.
- b. If First QDM data element, CURRENT CIGARETTE SMOKER, starts before or during the measurement period equals No, do not count towards cumulative risk factor total of equal to 2 and proceed to check Diagnosis Family History.

20. Check Diagnosis Family History:

- a. If First QDM data element, FAMILY HISTORY CHD, starts before or during the measurement period equals Yes, include in cumulative risk factor total of equal to 2 and proceed to check Laboratory Test Result.
- b. If First QDM data element, FAMILY HISTORY CHD, starts before or during the measurement period equals No, do not count towards cumulative risk factor total of equal to 2 and proceed to check Laboratory Test Result.

21. Check Laboratory Test Result:

- a. If First QDM data element, HIGH DENSITY LIPOPROTEIN (HDL) (result less than 40 mg/dL) during measurement period equals Yes, include in cumulative risk factor total of equal to 2 and proceed to check Diagnosis Active or Medication Active.
- b. If First QDM data element, HIGH DENSITY LIPOPROTEIN (HDL) (result less than 40 mg/dL), during measurement period equals No, do not count towards cumulative risk factor total of equal to 2 and proceed to check Diagnosis Active or Medication Active.

22. Check Diagnosis Active or Medication Active:

- a. If First QDM data element, DIAGNOSIS OF HYPERTENSION GROUPED starts before or during measurement period, or, if First QDM data element, ANTI-HYPERTENSIVE PHARMACOLOGIC THERAPY, during measurement period equals Yes, include in cumulative risk factor total of equal to 2 and proceed to check cumulative risk factor total.
- b. If First QDM data element, DIAGNOSIS OF HYPERTENSION GROUPED, starts before or during measurement period, or, if First QDM data element, ANTI-HYPERTENSIVE PHARMACOLOGIC THERAPY, during measurement period equals No, do not count towards cumulative risk factor total of equal to 2 and proceed to check cumulative risk factor total.

23. Check cumulative risk factor total:

- a. If the cumulative risk factor total equals 2 proceed to check Laboratory Test Result.
- b. If the cumulative risk factor total does not equal 2 proceed to check Patient Characteristic.

24. Check Laboratory Test Result:

- a. If Most Recent Occurrence A of QDM data element, HIGH DENSITY LIPOPROTEIN (HDL) (result greater than or equal to 60 mg/dL), during measurement period equals Yes, proceed to check Patient Characteristic Sex and Patient Characteristic Birthdate.

- b. If Most Recent Occurrence A of QDM data element, HIGH DENSITY LIPOPROTEIN (HDL) (result greater than or equal to 60 mg/dL), during measurement period equals No, proceed to check Patient Characteristic.
- 25. Check Patient Characteristic Sex and Patient Characteristic Birthdate:
  - a. If QDM data element, MALE, and QDM data element, BIRTH DATE, less than 45 years, or, if QDM data element, FEMALE, and QDM data element, BIRTH DATE, less than 55 years starts before start of measurement period equals Yes, include in Eligible Denominator Population 3 and proceed to Denominator Exclusions 3.
  - b. If QDM data element, MALE, and QDM data element, BIRTH DATE, less than 45 years, or, if QDM data element, FEMALE, and QDM data element, BIRTH DATE, less than 55 years starts before start of measurement period equals No, proceed to check Patient Characteristic.
- 26. Check Patient Characteristic:
  - a. If First QDM data element, CURRENT CIGARETTE SMOKER, starts before or during the measurement period equals Yes, include in cumulative risk factor equal to 1 and proceed to check Diagnosis Family History.
  - b. If First QDM data element, CURRENT CIGARETTE SMOKER, starts before or during the measurement period equals No, do not count towards cumulative risk factor total of equal to 1 and proceed to check Diagnosis Family History
- 27. Check Diagnosis Family History:
  - a. If First QDM data element, FAMILY HISTORY CHD, starts before or during the measurement period equals Yes, include in cumulative risk factor equal to 1 and proceed to check Laboratory Test Result.
  - b. If First QDM data element, FAMILY HISTORY CHD, starts before or during the measurement period equals No, do not count towards cumulative risk factor total of equal to 1 and proceed to check Laboratory Test Result.
- 28. Check Laboratory Test Result:
  - a. If First QDM data element, HIGH DENSITY LIPOPROTEIN (HDL) (result less than 40 mg/dL), during measurement period equals Yes, include in cumulative risk factor equal to 1 and proceed to check Diagnosis Active or Medication Active.
  - b. If First QDM data element, HIGH DENSITY LIPOPROTEIN (HDL) (result less than 40 mg/dL), during measurement period equals No, do not count towards cumulative risk factor total of equal to 1 and proceed to check Diagnosis Active or Medication Active.
- 29. Check Diagnosis Active or Medication Active:
  - a. If First QDM data element, DIAGNOSIS OF HYPERTENSION GROUPED, starts before or during measurement period, or, if First QDM data element ANTI-HYPERTENSIVE PHARMACOLOGIC THERAPY, during measurement period equals Yes, include in cumulative risk factor equal to 1 and proceed to check cumulative risk factor total.
  - b. If First QDM data element, DIAGNOSIS OF HYPERTENSION GROUPED, starts before or during measurement period, or, if First QDM data element ANTI-HYPERTENSIVE PHARMACOLOGIC THERAPY, during measurement period equals No, do not count towards cumulative risk factor total of equal to 1 and proceed to check cumulative risk factor total.

30. Check cumulative risk factor total:
- If the cumulative risk factor total equals 1 proceed to check Patient Characteristic Sex and Patient Characteristic Birthdate.
  - If the cumulative risk factor total does not equal 1 do not include in Eligible Denominator Population 3. Stop processing.
31. Check Patient Characteristic Sex and Patient Characteristic Birthdate:
- If QDM data element, MALE, and QDM data element, BIRTH DATE, less than 45 years, or if QDM data element, FEMALE, and QDM data element, BIRTH DATE, less than 55 years starts before start of measurement period equals Yes, include in Eligible Denominator Population 3 and proceed to Eligible Denominator Population 3.
  - If QDM data element, MALE, and QDM data element, BIRTH DATE, less than 45 years, or if QDM data element, FEMALE, and QDM data element, BIRTH DATE, less than 55 years starts before start of measurement period equals No, do not include in Eligible Population 3 and stop processing.
32. Start Eligible Denominator Population 3
- Eligible Denominator Population 3 is represented by letter B in the sample calculation listed at the end of Population 3. Letter B equals 8 patients in the sample calculation.
33. Start Denominator Exclusions 3
34. Check Procedure Order:
- If QDM data element, PALLIATIVE CARE, during measurement period equals Yes, include in Denominator Exclusions count. Denominator Exclusions are represented by the letter C<sup>1</sup> in the sample calculation listed at the end of Population 3. Letter C<sup>1</sup> equals 1 patient in the sample calculation.
  - If QDM data element, PALLIATIVE CARE, during measurement period equals No, proceed to check Diagnosis Active.
35. Check Diagnosis Active:
- If QDM data element, PREGNANCY, starts before or during but does not end before start of measurement period equals Yes, include in Denominator Exclusions count. Exclusions are represented by the letter C<sup>2</sup> in the sample calculation listed at the end of Population 3. Letter C<sup>2</sup> equals 1 patient in the sample calculation.
  - If QDM data element, PREGNANCY, starts before or during but does not end before start of measurement period equals No, proceed to Numerator 3.
36. Start Numerator 3
37. Check Laboratory Test Performed:
- If QDM data element, LDL CODE, less than or equal to 4 years starts before or during measurement period equals Yes, include in Numerator 3 count. Numerator is represented by the letter A<sup>1</sup> in the sample calculation listed at the end of Population 3. Letter A<sup>1</sup> equals 1 patient in the sample calculation.

- b. If QDM data element, LDL CODE, less than or equal to 4 years starts before or during equals No, proceed to check next Laboratory Test Performed.

38. Check Laboratory Test Performed:

- a. If QDM data element, TOTAL CHOLESTEROL, and QDM data element, HIGH DENSITY LIPOPROTEIN (HDL), and QDM data element, TRIGLYCERIDES less than or equal to 4 years starts before or during equals Yes, include in Numerator 3 count. Numerators are represented by the letter A<sup>2</sup> in the sample calculation listed at the end of Population 3. Letter A<sup>2</sup> equals 1 patient in the sample calculation.
- b. If QDM data element, TOTAL CHOLESTEROL, and QDM data element, HIGH DENSITY LIPOPROTEIN (HDL), and QDM data element, TRIGLYCERIDES during the measurement period, less than or equal to 4 years starts before or during equals No, proceed to Denominator Exceptions 3.

39. Start Denominator Exceptions 3

40. Check Laboratory Test Performed not done:

- a. If QDM data element, PATIENT REASON REFUSED, for LDL Test Grouping Value Set during the measurement period equals Yes, include in Denominator Exceptions count. Exceptions are represented by the letter D in the sample calculation listed at the end of Population 3. Letter D equals 2 patients in the sample calculation.
- b. If QDM data element, PATIENT REASON REFUSED, for LDL Test Grouping Value Set during the measurement period equals No, include in No/Missing Numerator Data Submitted count and stop processing.

**SAMPLE CALCULATION:** *Combination of Initial Patient Population 3; Denominator 3; Numerator 3*

**Performance Rate=**

Numerator ( $a^1 + a^2 = 2$  patients)

÷

Denominator ( $b=8$  patients) – Denominator Exclusions ( $c^1 + c^2 = 2$  patients) – Denominator Exceptions ( $d=2$  patients)

= **50.00%**